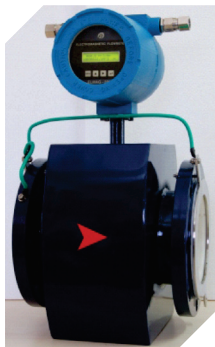


Flow Meters

Chemtrols is a solution provider of **Flow Measuring instruments** based on various principals to meet the application requirements of process plants, briefly summarized below.

<h3>Flow Meters</h3>	Variable Area / Rotameters
	Electro Magnetic Flow Meters
	PD Meters
	Ultrasonic Clamp-on Flow Meters
	Turbine Flow Meters
	Coriolis Bass Flow Meters
	Ultrasonic Flare Gas Flow Meters
	Ultrasonic Process Gas Flow Meters



- Electromagnetic Flow Meters

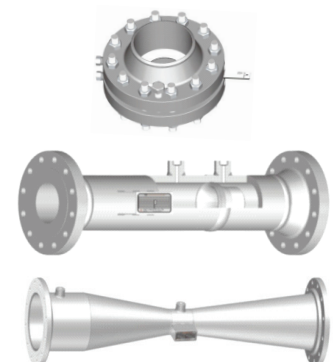


- Metal Tube Variable Area Meters (Rotameters)

Flow Measuring Sensors

Besides, we also offer a wide primary Flow measuring Sensors like Orifice, Flow Nozzles, Venturi Tubes, Cone Flow Meters and Pitot tubes.

<h3>Flow Measuring Sensors & Conditioning Systems</h3>	Orifice Plates & Flange Assemblies
	Orifice Meter Runs Assemblies
	Multi-stage Restriction Orifice Assemblies
	Flow Straighteners'
	Weld-in type Flow Nozzles
	Welded type Venturi Tubes
	Duct Type Venturi
	Taper Segment Tube Assemblies
	Cone Flow Meters
	Pitot Tubes & Assemblies



- Orifice & Flow Nozzles & Venturi

Orifice & Nozzles

Primary Differential Pressure devices

Chemtrols offers a wide range of primary differential pressure devices to measure flow, based on various principles of physics. These include flow elements like the Measuring Orifice, Restriction Orifice, Flow Nozzles, Venturi Tube, Cone Type flow meter, Taper Seg Tube, Pitot tubes and related accessories like the Condensate Pots, Fittings etc. in conjunction.



Orifice Plate



Orifice Plate with Octagonal Ring



Orifice Plate with Oval Ring



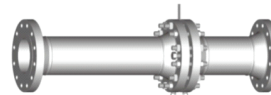
Orifice Assembly



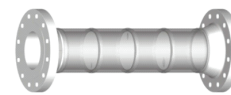
Orifice Plate with Ring



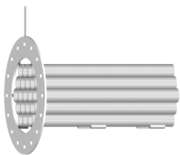
Orifice Plate with Integral Block



Orifice Meter Run Assembly



Multi-Stage Restriction Orifice Assembly



Flow Straighteners



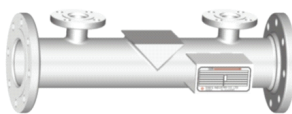
Weld in type Flow Nozzle



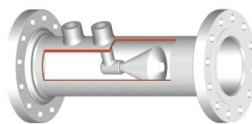
Welded type Venturi Tube



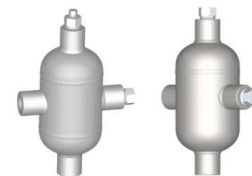
Tetragon Duct Type Venturi



Taper Segment Tube



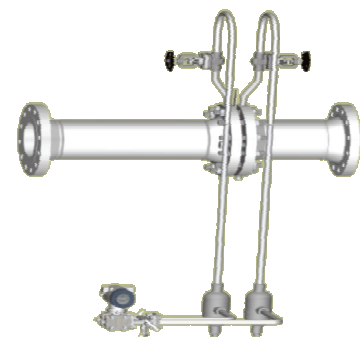
Cone Type Flow Meter



Condensate Pots

Orifice Plates & Flanges

These primary devices like the Measuring Orifice and restricted orifice are used for fluid & gas flow measurement by means of the differential pressure and also pressure reducing devices, are intended on pressure drop and steady fluid flow.

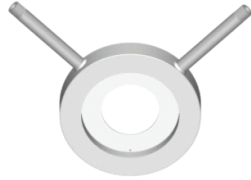


Orifice Assemblies

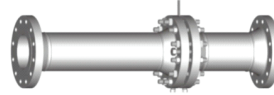
As per ANSI, B16 and other global standard



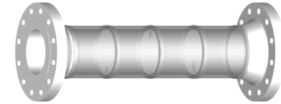
Orifice Plate with Ring



Orifice Plate with Integral Block

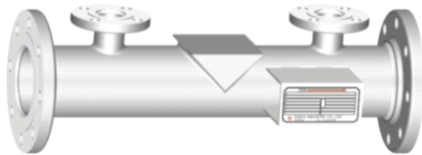


Orifice Meter Run Assembly

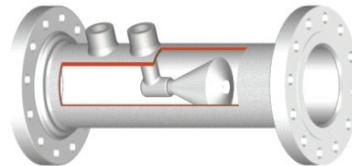


Multi-Stage Restriction Orifice Assembly

Taper Segment Tube



Taper Segment Flow Meter

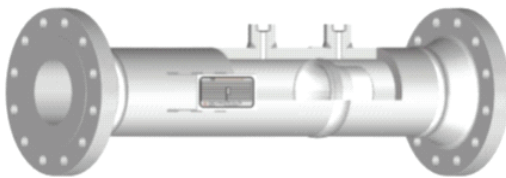


Cone Type Flow Meters



Pilot Tubes

Flow Nozzles



Weld in type Flow Nozzle

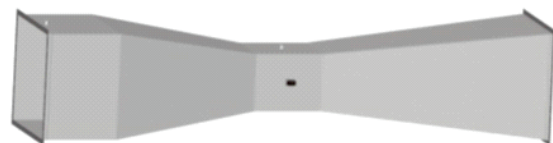
Suitable for determining the flow rate of fluid flowing at high pressure and high temperature and is permit approximately 60% greater capacity than the orifice plate.

Flow Venturi Tubes

- Flow Venturies



Welded type Venturi Tube



Tetragon Duct Type Venturi